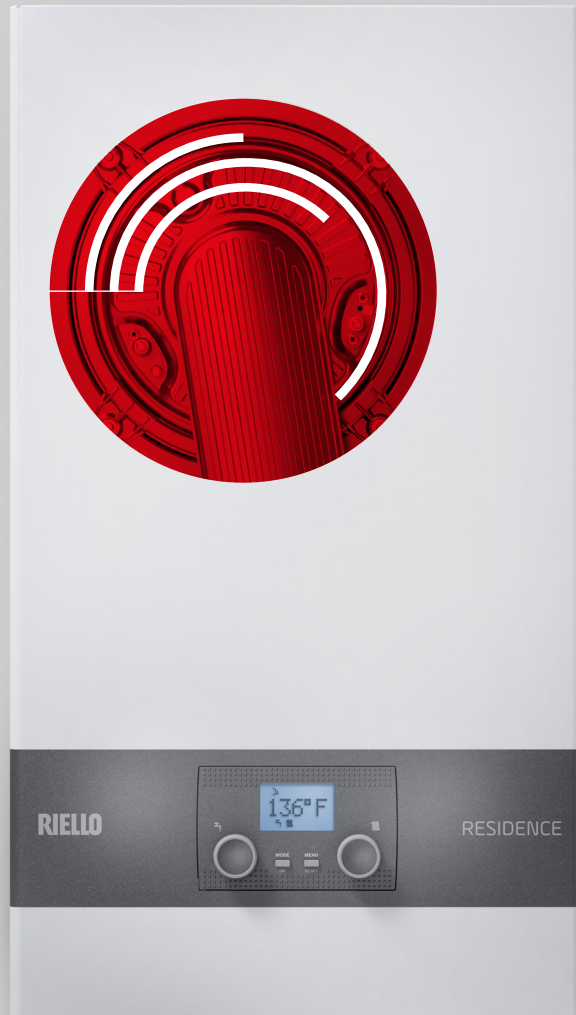


RESIDENCE PRO



RIELLO
Energy For Life

RIELLO INTRODUCES

THE NEW RESIDENCE PRO



HIGH EFFICIENCY – AFUE 95%

Optimal comfort and minimum consumption for both heating and domestic hot water (DHW). Innovative condensing DHW plate heat exchanger optimizes efficiency, temperature stability and stand-by time.



LEAD FREE

Combi models are certified to NSF/ANSI 372-2016 – Low lead content certification program – plumbing products and conform to the requirements for "lead free" plumbing products.



VERSATILITY

The Residence range is already equipped with two BUS communication protocols to enable interaction with the hybrid control panel, seamless integration into a multi-energy system, and connectivity with RiCLOUD.



ACTIVE COMBUSTION CONTROL

Advanced electronic combustion control system that electronically monitors combustion on an ongoing basis to ensure optimal consumption and emissions.



QUICK INSTALLATION

Time is valuable. With Residence, installation and access to components are simplified to minimize time and effort.



HIGH ALTITUDE

Certified and tested at high altitude (up to 10,000 ft) as per CSA standard. No hardware modification required.



INNOVATIVE HEAT EXCHANGER

Stainless steel coil primary heat exchanger. Efficiency and reliability are at the heart of Residence.



INTUITIVE CONTROL

The graphic color display provides ongoing information about the operational status of the boiler. Navigating functions and settings has never been so easy, thanks to the icon and text-based interface.



LOW EMISSIONS – SOUTH COAST AQMD CERTIFICATE

As part of our ongoing drive to reduce emissions, the Family range of boilers has achieved Low NOx values of emissions which meet criteria for SOUTH COAST AQMD.

NOTE: Residence PRO are certified to the ANSI Z21.13-2017 • CSA 4.9-2017 – Gas-Fired low pressure steam and hot water boilers.

RIELLO

CHOOSING RESIDENCE

MEANS CHOOSING THE BEST

INNOVATIVE
**STAINLESS STEEL
HEAT EXCHANGER**
FOR MAXIMUM
RELIABILITY AND
CONTINUOUS
HIGH EFFICIENCY

2,38 US GAL (9 LITER)
EXPANSION
TANK

FLUE GAS CHECK
VALVE SUPPLIED AS
STANDARD

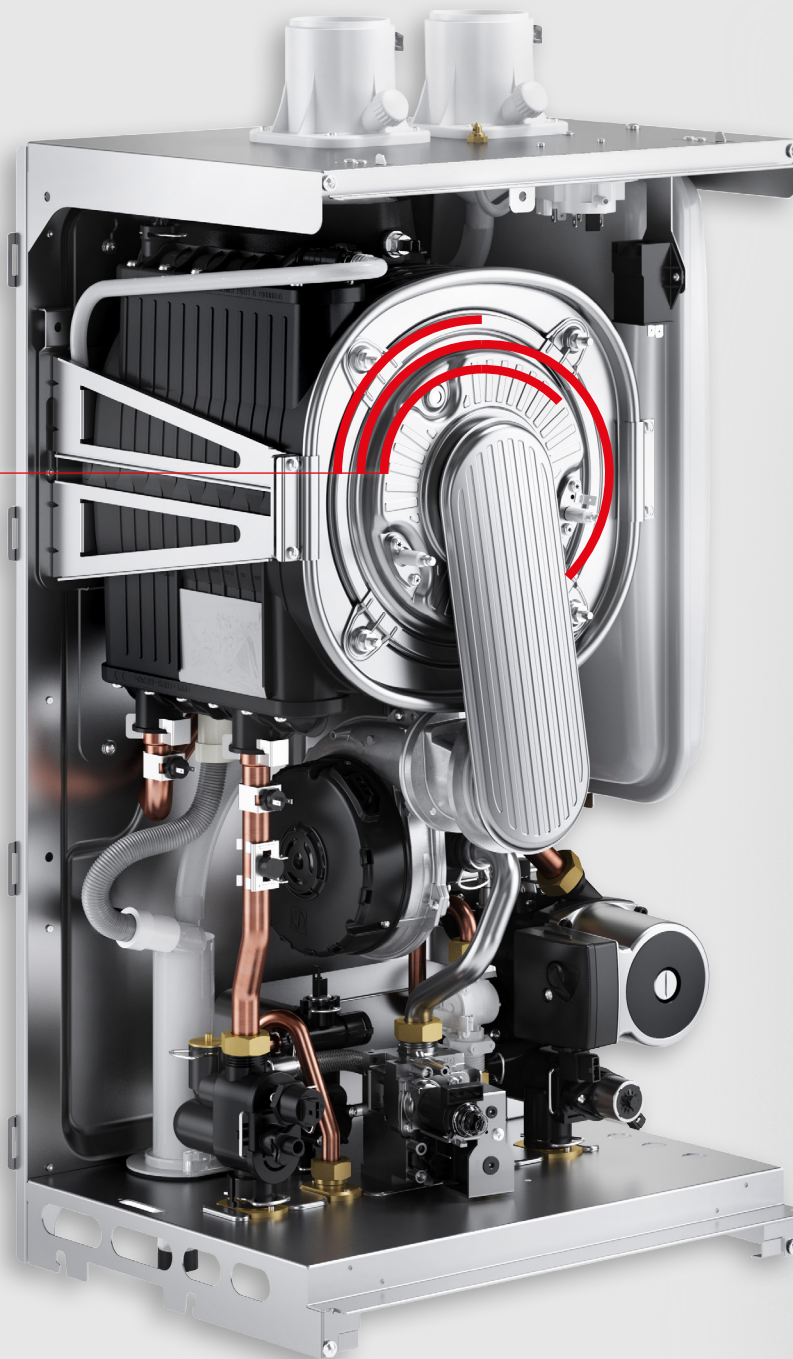
A NEW DESIGN WITH
CLEAN, ELEGANT LINES

DHW HEAT EXCHANGER
FOR EXCEPTIONAL
PERFORMANCE AND
COMFORT

ACTIVE COMBUSTION
CONTROL **ACC**

BUS CONNECTIVITY
SUPPORTING INTEGRATION
INTO MULTI-ENERGY
SYSTEMS

THE COLOR DISPLAY
FACILITATES CONTROL
AND MANAGEMENT
OPERATIONS



RESIDENCE PRO IS AVAILABLE IN 'COMBI' VERSION

RESIDENCE PRO 32 KW

Dedicated LPG code are no longer necessary because Residence PRO can automatically adapt operation to fuel type. Residence PRO's features and its compact size make it the ideal solution also for cupboard-fit installation. Please refer to the Riello Residence PRO Installation and Operation Manual for additional information.

RIELLO

EMISSIONS UNDER CONTROL

ADAPTIVE ELECTRONIC COMBUSTION CONTROL

RESIDENCE PRO's Active Combustion Control (ACC) system, designed and developed by Riello, allows for **functionality, efficiency and low emissions under any conditions**. The ACC system uses an ionization sensor immersed in the burner flame, which notifies the control board to operate the gas valve that regulates the fuel.

The system keeps the air/gas mixture constant at optimum values throughout the power modulation (allowing the CO₂ readings to remain steady). RESIDENCE PRO's sophisticated control system provides the **auto-regulation of the combustion** so there is no need for an initial calibration.

The ACC system is able to adapt the boiler to



operate with different gas compositions. The ACC system can also perform an auto-diagnostic operation that locks out the burner before the permitted upper emission limit is exceeded.

ACC advantages:

Auto-adaptability of the

system to the type and composition of the gas. Gas transformation kits are no longer needed!

No mechanical calibration

or manual intervention on combustion is required on the boiler

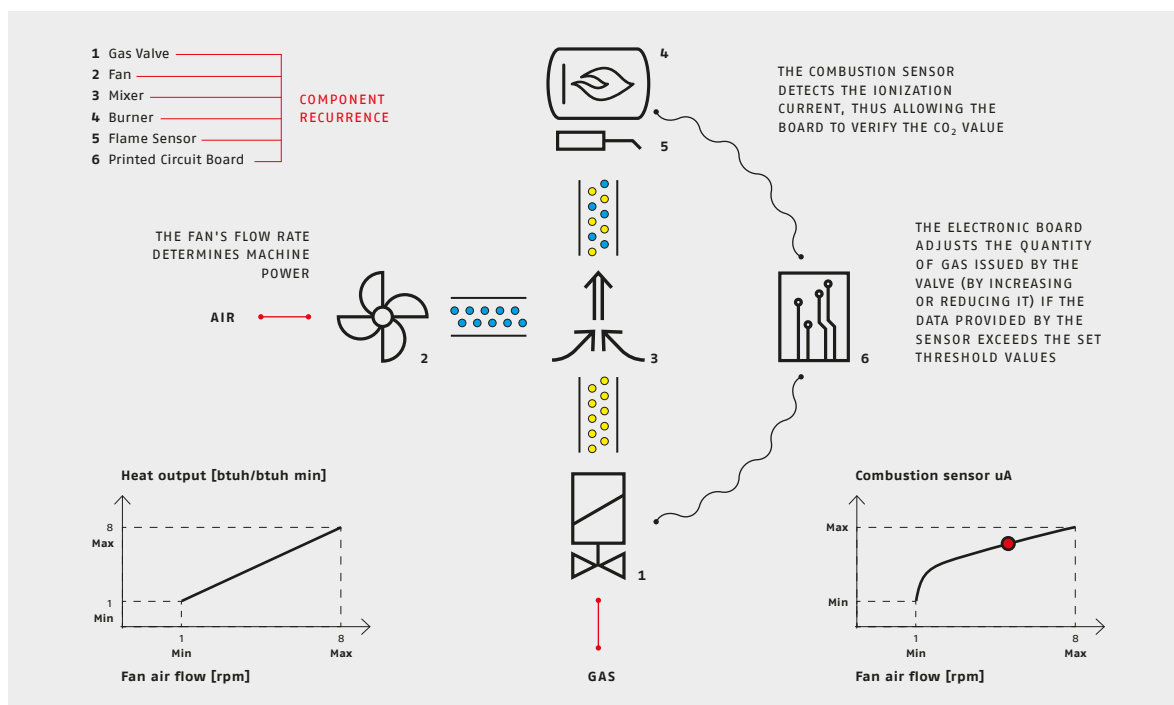
Steady stoichiometric (*) air/fuel value in any circumstance.

Continuous emission control in compliance with standard limits.

Gas saving compared to traditional systems.

Efficiency and reliability over time thanks to self-learning with compensation from the ACC system. The boiler has the ability to change its operations based on data received from compensation parameters that take in consideration both deterioration of components and data acquired over time.

RESIDENCE PRO
PEACE OF MIND
AND RESPECT FOR
THE ENVIRONMENT



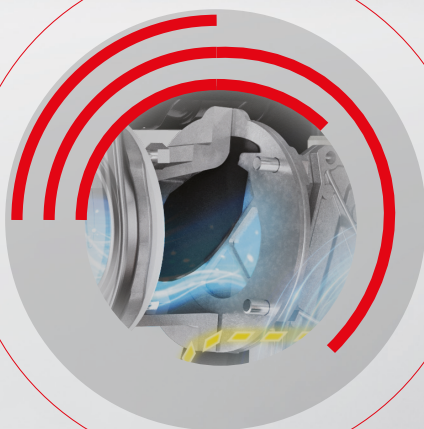
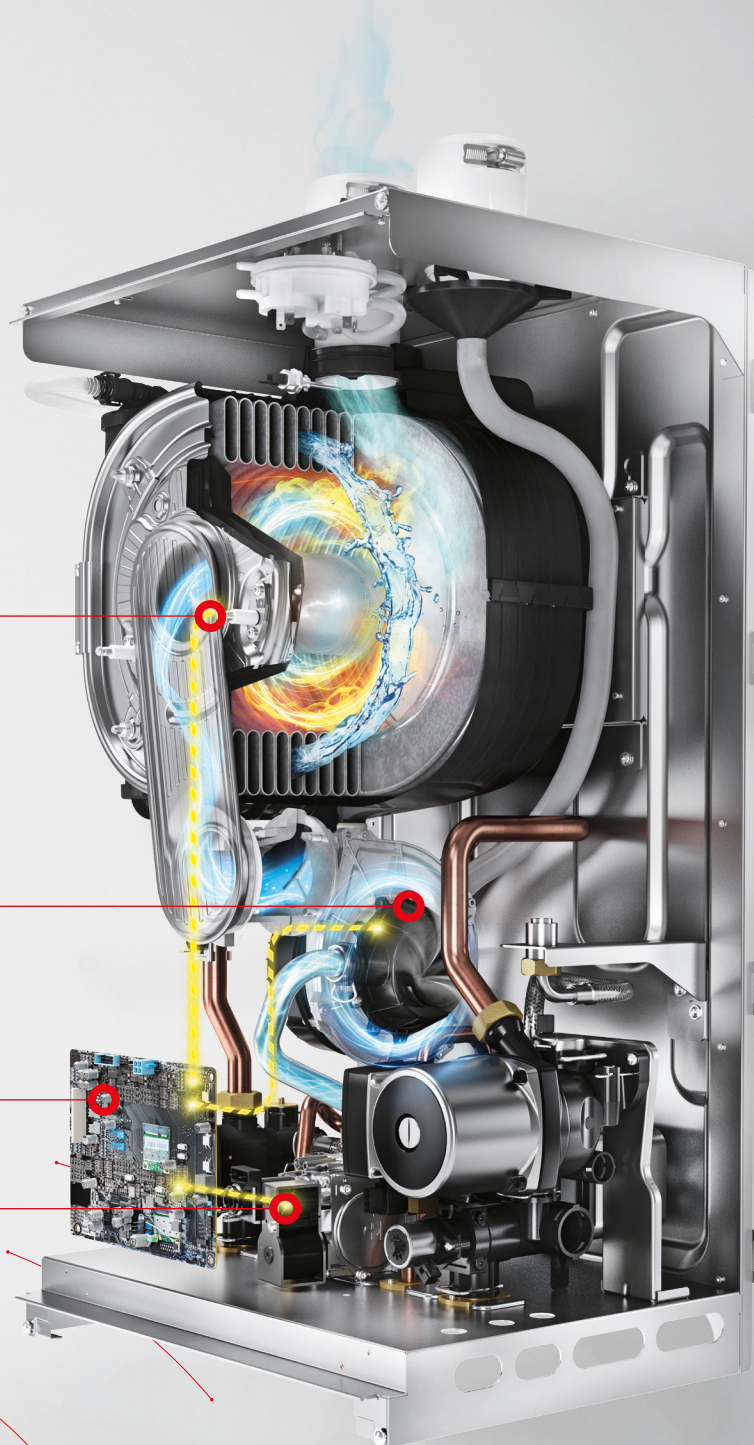
(*) The quantitative relationship among substances as they participate in chemical reactions.

BURNER WITH
FLAME SENSOR

HALL EFFECT FAN

PRINTED
CIRCUIT BOARD

GAS VALVE



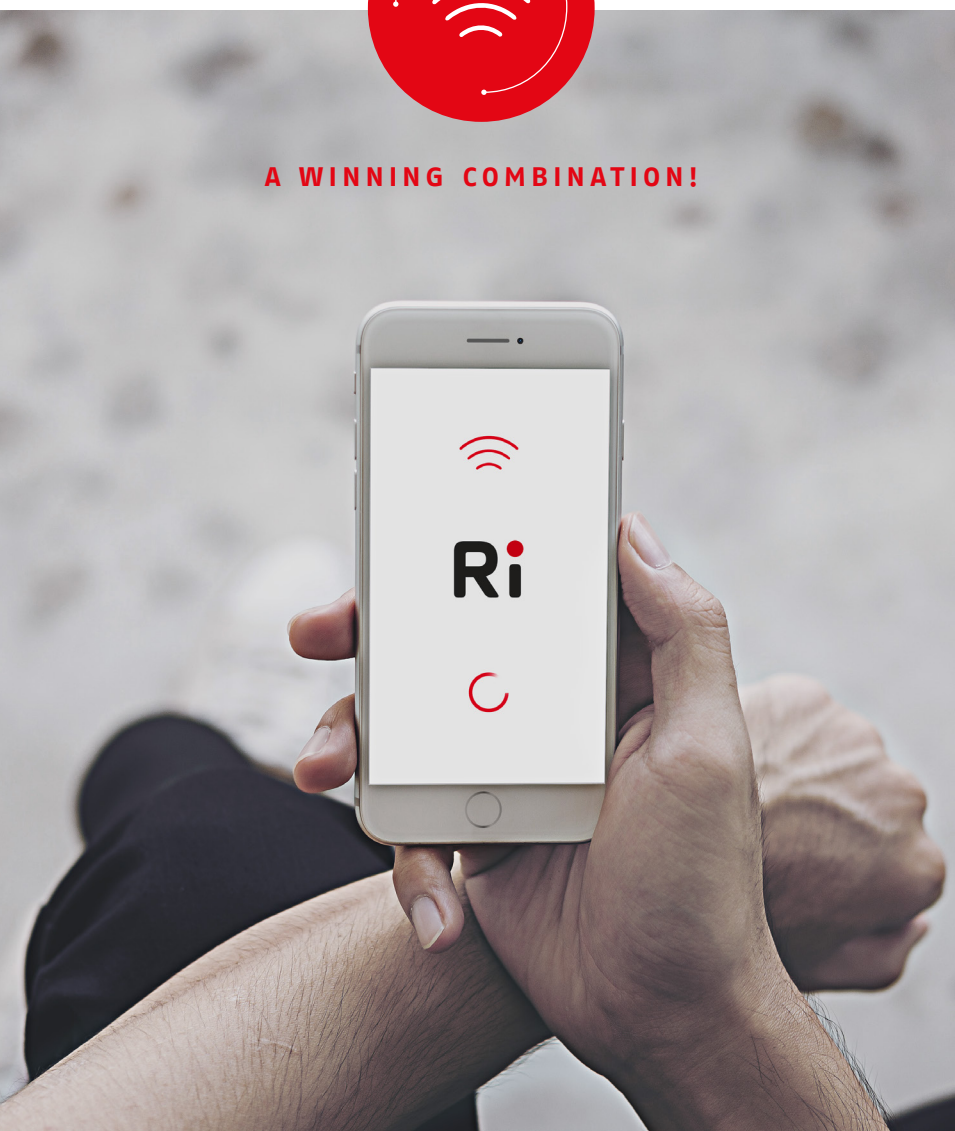
BUILT-IN FLUE GAS CHECK VALVE

The Residence PRO is equipped
with **flue gas check valve**
supplied as standard.

RIELLO



A WINNING COMBINATION!



CONTROL PANEL AND FUNCTIONS



RiCLOUD

**COMFORT AT YOUR
FINGERTIPS**

The RiCLOUD **smart remote control** enables you to manage the comfort of your home in an easy, intuitive way, even **when you are away.**

The dedicated App allows you to monitor the status of the heating, cooling and fan system and program boiler ignition, switch-off, temperature and operating time, directly from your smartphone or tablet. Riello boilers are also compatible with OTBus connection for a full remote control of the boiler thanks to RiCLOUD and its APP. You can manage up to 8 different zones, each controlled by its dedicated RiCLOUD.

RiCLOUD can also be installed in 100% wireless mode through the use of radio receiver, available as an option, to eliminate having to do any work on the electrical system or walls.

**THE WORLD OF
RESIDENCE PRO BECOMES
EVEN BIGGER WITH
RiCLOUD**

RESIDENCE PRO

IN SHORT



BOILER MODEL	UNITS	COMBI
PRODUCT ORDER CODE		20133229
SPECIFICATIONS		
(0-2000 ft / 0-610 m)		
MAX CSA INPUT CH/DHW	Btu/hr kW	85,000/120,000 24.91/35.17
MIN CSA INPUT CH/DHW	Btu/hr kW	17,000 4.98
(2001-5000 ft / 610-1524 m)		
MAX CSA INPUT CH/DHW	Btu/hr kW	85,000/102,000 24.91/29.89
MIN CSA INPUT CH/DHW	Btu/hr kW	17,500 5.13
(5001-7500 ft / 1524-2286 m)		
MAX CSA INPUT CH/DHW	Btu/hr kW	85,000/91,000 24.91/26.67
MIN CSA INPUT CH/DHW	Btu/hr kW	15,500 4.54
(7501-10000 ft / 2286-3048 m)		
MAX CSA INPUT CH/DHW	Btu/hr kW	83,000/83,000 24.32/24.32
MIN CSA INPUT CH/DHW	Btu/hr kW	14,000 4.10
A.F.U.E.	%	95.0
Gas connection NPT - female	in	3/4
Water connection NPT - male	in	3/4
D.H.W. connection NPT - male	in	1/2
Flue connection	in	2
Air inlet connection	in	2
Weight	lb kg	89.3 40.5
Electrical Rate Voltage	V-Hz	120-60
D.H.W. PERFORMANCES		
Continuous D.H.W. Flow Rate	l/min	12.5
	US GPH	198
	US GPM	3.3
VENTING SYSTEM		
Max lenght horizontal flue terminal 2.36/3.94"	ft	30
flue gases/air - PP material		
Max lenght horizontal flue terminal 3.15/4.92"	ft	40
flue gases/air - PP material		
Max lenght horizontal twin flue terminal 2"	ft	(25,5+10)+(25,5+10)
with terminal bend - CPVC material		
Max lenght vertical twin flue terminal 2"	ft	(25,5+15)+(25,5+15)
with terminal bend for flat room - CPVC material		

NEW STAINLESS STEEL
PRIMARY HEAT EXCHANGER

INNOVATIVE
HIGH-EFFICIENCY
DHW HEAT EXCHANGER

ACC
ACTIVE
COMBUSTION CONTROL

LOW NOX VALUES
OF EMISSIONS

CONDENSATE
CHECK VALVE
AS STANDARD

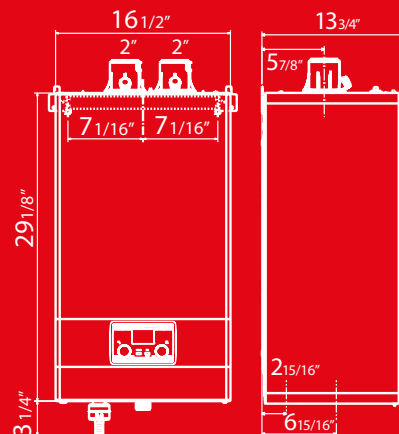
INTUITIVE DISPLAY
WITH COLOR
INTERFACE

WIDE CHOICE
OF ACCESSORIES AND
SYSTEM SOLUTIONS

QUICK INSTALLATION

INSTALLATION
VERSATILITY

BUILT-IN FLUE GAS CHECK
VALVE



NOTE: Please, for all the technical data refer to instruction manual
Residence PRO are certified to the ANSI Z21.13-2017 & CSA 4.4-2017 - Gas-Fired low pressure steam and hot water boilers.
Residence PRO are certified to the ANSI Z21.10.3-2017 & CSA 4.4-2017 - Automatic Instantaneous Water Heater.



As Riello continuously strives to improve our products, we reserve the right to make changes without prior notification.

ABOUT RIELLO

Founded in 1922, Riello is a leading manufacturer of products and services for heating, air-conditioning and energy efficiency. Headquartered in Legnago (Verona), Italy, Riello operates in over 120 countries. Riello is a part of UTC Climate, Controls & Security, a unit of United Technologies Corp., a leading provider to the aerospace and building systems industries worldwide. For more information, visit

www.riello.com

NORTH AMERICAN DISTRIBUTOR:

Evergreen Products International Inc.

1815 Sismet Rd.

Mississauga, ON L4W 1P9

CANADA

Technical Support Hotline: **1.844.387.4663**

Email: info@egproductsolutions.com

Professional Resources: egproductsolutions.com

The Company is constantly working to perfect all of its production processes, therefore the aesthetics and size, technical data, equipment and accessories of the products may be subject to change.

RIELLO