

FTV SERIES

Fire Tube Boilers Made Simple



Products you need
from people who care

Fire tube stainless steel heat
exchanger for exceptional
efficiency and durability

Reliable and affordable
solution for every home

Heat only and Combi
versions available in three
sizes: 110, 150 and 190 MBH

95% AFUE



ntiboilers.com



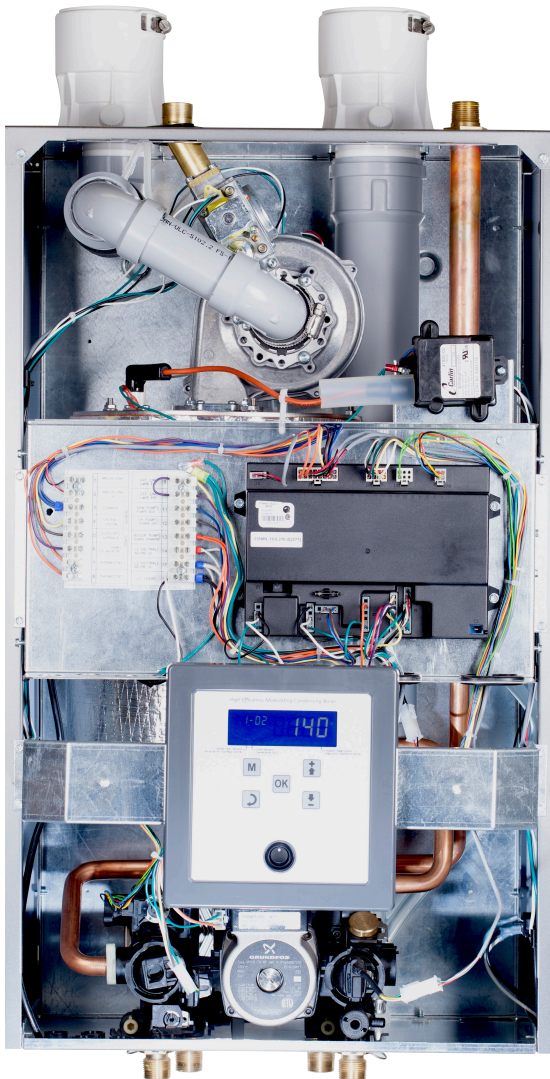
Designed & Produced
in North America
for North America

It's all that you need

The FTV is a high-efficiency, wall-hung boiler equipped with a **vertical fire tube heat exchanger** made of industry proven 439 stainless steel. NTI's user-friendly programmable display and easy to access components makes it **easy to install, set up and maintain**, while its unique design enables simpler plumbing layouts to **keep costs well under control**.

The FTV Combi has ample space heating capacity and adds endless hot water to its repertoire, making it a great 2-in-1 appliance.

The FTV's smart solutions and quality componentry ensure you **get the best value for money**.



Efficiency and Durability



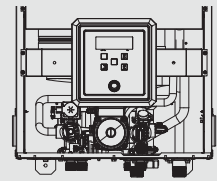
NTI's FTV heat exchanger is made of 439 stainless steel to ensure maximum durability.

All fire tube heat exchangers are NOT made the same! Our fire tubes are dimpled to extract maximum efficiency without the need for inserts that will degrade over time.

Cross-series platform

To ease the serviceability of all our boilers, NTI rationalizes parts across our various series to minimize the number of different parts you need to stock and carry.

More importantly, if you train on one product, you'll automatically be familiar with the other NTI products.



Simultaneous 2.5 GPM showers (55°F inlet temp)

FTV 110C



FTV 150C



FTV 190C



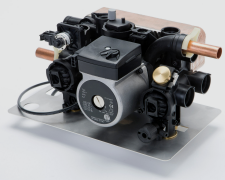
On demand DHW (Combi)

With the FTV Combi, every homeowner can enjoy the comfort of endless hot water and space heating in one single appliance.

It significantly reduces the installation cost and the mechanical room space required. Those are cost savings for you!

Integrated pump and no primary loop or system pump required (Combi)

The FTV Combi is equipped with a pump, a plate heat exchanger and a pressure bypass. The internal pump can provide circulation for zone valve based heating systems, saving you the cost of a circulator (limited to systems requiring no more than 6 GPM at 9 ft. of head - see IOM).



Details make the difference!

At NTI, we listen to our customers and use their feedback to guide our innovation. Over the years we have implemented continuous improvements and new features with one goal: your satisfaction.

Top condensing technology

As one of the pioneers to introduce high efficiency condensing boilers to North America, NTI designs only 'top of the class' products.

The FTV is certified at 95% AFUE with 10:1 TDR.

95% AFUE

Low loss header (Primary loop)

The FTV (combi) includes a low loss header (primary loop) manifold reducing installation time and cost.



Outdoor reset sensor included

We make sure you have the right components you need to install our boilers. Our outdoor reset sensor is high quality and field-tested (and is included!).



High-energy spark ignition

We are known for our quality startup. All NTI boilers are equipped with an external high-energy spark transformer to ensure proper ignition, each and every time.



Universal vent connections with embedded test port

Our vent connections include a combustion analyzer test port and can accommodate PVC, PP and stainless steel pipes without the need for any adapters.



Best venting with 2" up to 100 ft

Thanks to the low flue gas temperatures and powerful combustion blower, you can exhaust vent up to 100 ft with 2" and up to 150 ft with 3", even with PVC (subject to local codes).

**100 ft (2")
150 ft (3")**

Effortless gas type convertibility

To convert your boiler from NG to LP and vice versa, you won't need time consuming assembly operations. You just need to remove two screws to install our factory supplied venturi insert.



Multi-unit cascade function

Connect up to 16 boilers with our integrated cascading function to easily meet even the most demanding installations. No optional devices required.

x 16

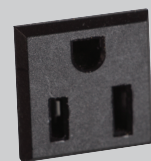
Advanced DHW flow sensor (Combi)

Our DHW flow sensor, designed for high volume aggressive fluids, has no moving parts and is the most reliable solution in the market.



120V convenience outlet

When electricians forget about you, you can count on NTI. All NTI products, including our new FTV boilers, come with a built-in 120V convenience outlet. You can use it to power a condensate pump or just to charge your phone!



Brazed plate DHW heat exchanger (Combi)

Our high quality, NSF certified brazed plate heat exchanger is sized to provide all the hot water you need, from small condos to whole house applications.

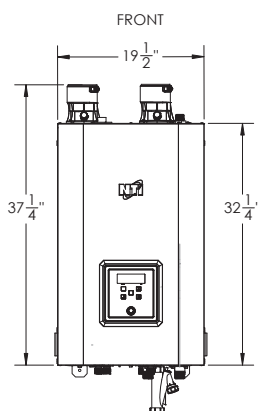


Easy to program display

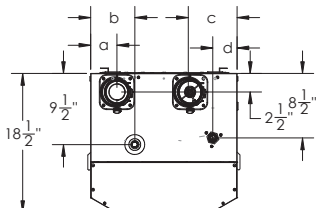
NTI's well known display is intuitive and powerful, with plenty of programmable options and viewable parameters. The on/off power switch is right on the front.



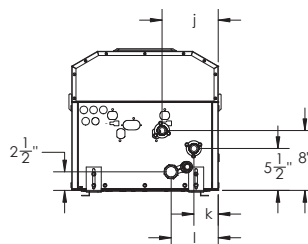
Dimensions



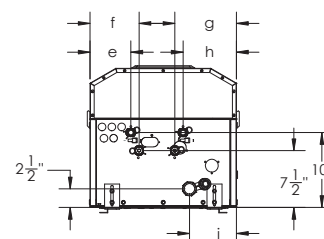
TOP			
DIM	FTV 110/C	FTV 150/C	FTV 190/C
a	14 1/2"	3 1/2"	3 1/2"
b	7 3/4"	5 3/4"	5 3/4"
c	14 3/4"	6 1/2"	5 3/4"
d	12 1/4"	3 1/4"	2 1/2"



HEAT ONLY BOTTOM			
DIM	FTV 110	FTV 150	FTV 190
j	6 1/2"	7 1/2"	6 3/4"
k	2 1/4"	3 1/4"	2 1/2"
l	14 1/2"	6 1/4"	2 1/2"



COMBI BOTTOM			
DIM	FTV 110C	FTV 150C	FTV 190C
e	6 1/4"	5 1/2"	6 1/4"
f	7 1/2"	6 1/2"	7 1/4"
g	7 1/4"	8 1/4"	7 1/2"
h	6 1/4"	7"	6 1/4"
i	14 1/2"	6 1/4"	2 1/2"



Specifications

Specifications

Connections

			FTV110/C	FTV150/C	FTV190/C
Input	Heating and	Natural Gas	11 - 110 MBH	15 - 150 MBH	19 - 190 MBH
Power	DHW (Combi)	Propane			
AFUE			95%		
Heating capacity			101 MBH	138 MBH	176 MBH
Net AHRI Rating			88 MBH	120 MBH	153 MBH
DHW Flow Rate at 77°F T Rise (Combi)			2.7 GPM	3.6 GPM	4.5 GPM
Installation type			Indoor Wall Hung (rack available for floor standing installation)		
Weight			88 lb	98 lb	120 lb
Gas			1/2 in NPT female		
Water			3/4 in NPT male		
DHW			3/4 in NPT male		
Air Inlet			2 in (max 100 ft), 3 in (max 150 ft)	2 in (max 100 ft), 3 in (max 150 ft)	3 in (max 150 ft)
Flue			2 in (max 100 ft), 3 in (max 150 ft)	2 in (max 100 ft), 3 in (max 150 ft)	3 in (max 150 ft)

Optional accessories:

- FTV Tool Box
- Floor stand
- Low profile vent terminal (3" or 2")
- Concentric vent terminal (3" or 2")
- Tempering valve
- Boiler corrosion and limescale inhibitor
- Boiler system cleaner
- Boiler system descaler
- Low Water Cut-off kit
- System water temperature sensor
- 0-10V control interface



30 Stonegate Drive, Saint John
New Brunswick, Canada, E2H 0A4
Tel. +1 506 657 6000
Toll-free: 800 688 2575
Fax: +1 506 432 1135
ntiboilers.com

For more information:

Contact your local NTI representative or visit ntiboilers.com